



**SHABBAT SERVICE SCHEDULE**

**Shabbat Ha'azinu/Shuvah**

Friday, September 30th-6:00PM

Saturday, October 1st-9:30AM

**Anniversary Shabbat**

**Yom Kippur**

Friday, October 7th- 6:15PM

Saturday, October 8th- 9:30AM Shaharit,

5PM Minha, 6:15PM Neila

**Shabbat Hol HaMoed Sukkot**

*Friday, October 14th- 5:15PM (PJ Shabbat)*

Friday, October 14th- **7:30PM**

Saturday, October 15th- 9:30AM

**Shabbat Bereshit**

Friday, October 21st- 6:00PM

Saturday, October 22nd- 9:30AM

**Shabbat Noah/Rosh Hodesh**

Friday, October 28th-6:00PM

Saturday, October 29th-9:30AM

**Bat Mitzvah of Noa Leigh Hubara**

**SHABBAT CANDLE-LIGHTING TIMES**

September 30th-Candles 6:49PM

October 1st-Shabbat Ends 7:51PM

October 7th-Candles 6:40PM

October 8th-Shabbat Ends 7:43PM

October 14th-Candles 6:31PM

October 15th-Shabbat Ends 7:34PM

October 21st-Candles 6:23PM

October 22nd-Shabbat Ends 7:26PM

October 28th-Candles 6:15PM

October 29th-Shabbat Ends 7:18PM

**CONGREGATIONAL SUKKOT DINNER**

Please join us as we eat Shabbat dinner in Synagogue Emanu-El's Sukkah.

All Religious School students are highly encouraged to attend; Religious School students in grades K-6 get their dinners for **FREE!**

The festivities will take place  
**Friday, October 14th.**

*A special PJ Shabbat service for young children and their families begins at **5:15 PM***

*Dinner begins at **6:00PM***

*Services follow at **7:30 PM** (NOTE SPECIAL TIME)*

***\*Please RSVP by October 11th***

***Your payment is your reservation\****

***Call the Synagogue office at 571-3264.***

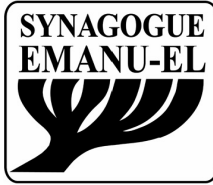
Adults \$ 18.00 12 & Under \$8.00  
Under 3 Free

Rabbi's Message.....2  
Office Administrator.....3  
Sisterhood News.....4  
Yahrzeits.....8  
Call to Minyan.....8  
Adult Education.....12  
Donations.....14-15  
Calendar.....16



Mazel Tov to Noa Leigh Hubara and family on her upcoming Bat Mitzvah October 29, 2011





5 Windsor Drive  
Charleston, SC 29407  
Phone (843) 571-3264  
Fax: (843) 402-0844  
Email:  
emanu-el@knology.net  
Website:  
www.Emanu-el.com

**Rabbi**

Adam J. Rosenbaum

**Religious School Principal**

Daphne Hubara

**President**

Ellen S. Steinberg

**1st Vice President**

Stanley Chepenik

**2nd Vice President**

Jacobo Mintzer

**Treasurer**

Mitchell Fischbein

**Financial Secretary**

Michael Schwartz

**Recording Secretary**

Laura Zucker

**Corresponding Secretary**

Roxann Spandorfer

**Parliamentarian**

Sharyn Bluestein

**Past President**

Jeffrey Cohen

**Board of Trustees**

Carrie Ben-Yisrael

Nicky Bluestein

Michael Engel

Al Hawkins

Brenda Lederman

Lydia Mandel

Owen Meislin

Beth Neboschick

**Men's Club President**

Edgar Weiss

**Sisterhood President**

Elisheva Holub



## FROM THE DESK OF RABBI ROSENBAUM

There are few times in the Jewish year more resonant than the closing minutes of Yom Kippur, when a room filled with Jews who have been fasting for more than 24 hours sing out their heartfelt prayers one more time before the final shofar sounds. For many, these moments are compelling not just because of the words in the *mabzor* (High Holy Day prayer book), but also because of the shared experiences from the past day -- namely, we “bond” with our neighbors because we are all hungry, exhausted, but ultimately (hopefully) uplifted and inspired to start the New Year right.

But this experience is not shared by all in our congregation. There are numerous people who are not physically able to fast on Yom Kippur. Perhaps they are nursing mothers or pregnant mothers-to-be; perhaps they have diabetes or another medical condition that requires eating on a regular basis; or perhaps they just reached the age of Bar/Bat Mitzvah and are inexperienced at going without food or water for a day. All of these are circumstances beyond their control; they would fast if they could, but they cannot.

This leads us to an important question: If we are unable to fast, how can we experience Yom Kippur in a fully meaningful way?

The first time I tried to fast on Yom Kippur, it was two months prior to my Bar Mitzvah; I wanted to “practice” fasting so that I could do so after I became a Jewish adult. But I couldn’t last the whole day; nor was I able to on Yom Kippur the next two years. Each time, I became faint and hysterical sometime around 5PM. While I knew that I had to break my fast, I was disappointed that I couldn’t complete it.

With the passage of time, I learned that the inability to fast does not prevent us from having a Yom Kippur worth remembering. I would like to suggest some ways we can observe the holiday even if we have to eat:

- While we must eat what we need to maintain our health, we should make a point of not devouring more than what we need; eliminating a dessert, for instance, might remind us that this is a unique day.
- Before we eat, we should say a proper blessing over the food, and after we eat, we should say *Birkat HaMazon* (the grace after meals), which can be found in standard prayer books. Since Yom Kippur represents the spiritual peak of the year, we should not refrain from communicating with God and thanking God for all of our gifts.
- It would be appropriate to use the occasion to donate food to a local shelter, or to donate enough money to pay for a meal for someone who is hungry. (This practice certainly would be appropriate for those who fast as well.)

Perhaps most importantly, we should remember that Yom Kippur is a day to dedicate ourselves to being the best people we can be. While examining our shortcomings can be a serious process, it also behooves us to remember that our minds and bodies can only handle so much at once. Just as we hope to be in the spirit of forgiveness with our neighbors whom we may have harmed over the past year, let us remember to forgive ourselves if we cannot fast.

I wish all of you a successful and meaningful Yom Kippur, satisfying for both the body and soul.

## OFFICE ADMINISTRATOR- MAYA HIRSCH KUPCHIK

This is my first month here at Synagogue Emanu-El. I'm so happy to be here and thought this, the first Scroll of my tenure here, is a good opportunity to write and share some of my thoughts with you. Please feel free to share your thoughts with me at [director@emanu-el.com](mailto:director@emanu-el.com)

As Yom Kippur is nearing, it's time for my *Cheshbon Nefesh*. That Moral Accounting, or the Math of the Soul, is something you plan for if you're observant, but even if you're not, it's bound to sneak up on you around this time of the year.

When you sit around the festive Rosh Hashanah table, don't you always remember where you were at this time last year? Doesn't it make you think of how different or how similar this year is? That's how the thought process starts for me. From there, I quickly get to the Math part: How much have I learned or grown this year? How well did I spend my time? Am I acting like the daughter, sister, wife, mother and friend I want to be? What should I change? What areas in my life am I content and happy with? What am I most grateful for? What has been frustrating and challenging for me this year?

Having just joined Synagogue Emanu-El, the concept of being a part of a community also occupies my thoughts and contemplation. Each one of us might want or need to be part of a community in a very different way, but our very basic human (let alone, Jewish!) nature, makes us desire to belong.

Some come here every day for Minyan. Others will come once a week for Shabbat. But what about those who will only need to belong every once in a while -- for special happy occasions, like a baby naming, a wedding, a Bar or Bat Mitzvah, a High Holy Day or, *l'hardil* (God forbid), for the most horrible time of losing a loved one? We expect our Synagogue to be here for us in the time we'll need it the most, but sometimes we forget that in order for that to happen, it's up to us to keep it alive and thriving.

Thinking about being involved always leads me to thoughts about volunteer work. Although they are different things, they both have in common the "care about something other than yourself" ingredient. For some people, *Tzedakah* or volunteer work are ways of life. These people are inspiring to all of us. Others feel like they don't always have the resources to give. Many times, I'll sadly find myself in that second group. Then I remind myself how fortunate I am for what I do have and how just a little act of kindness or involvement goes a long way. So I attend a meeting, or go to my son's school to volunteer, or go on that run/walk. I remind myself that giving is just like exercise: It's best to do it regularly, but if you can't, doing it sometimes is so much better than never.

There are so many ways to get involved, take part and belong. When we do that, it feels great. It feels great because we're not doing it for any immediate gain, but for the long term good of ourselves, our families, our community and our world.

Investing your time, money or energy in something you believe in will always feel great. That is why I highly recommend treating yourself and doing a *Mitzvah* every now and then.

Shana Tova!

Maya

## HAPPY BIRTHDAY TO:

Patti Bagg  
 Allan Lieberman  
 Marcia Miller  
 Jennifer Feinman  
 David Kalin  
 Alan Coleman  
 Randi Weinstein  
 Jacob Kestenbaum  
 Leon Rudich  
 Manny Cohen  
 Justin Debrow  
 Martin Gold  
 Ellen Yampolsky  
 Bruce Cohen  
 Chris Dye  
 Kim Dye  
 Scott LeRoy  
 Ruth Oser  
 Joan Feldman  
 Alex Hershenson  
 Andrea Berendt  
 Eli Poliakoff  
 Mitchell Fischbein  
 Paul Rundbaken  
 Irene Gilbert  
 Amy Goldberg  
 Steven Goldberg  
 Aiden Levy  
 Andrew Levy  
 Stuart Tessler  
 Herb Maier  
 Blanche Seifstein  
 Sharon Toporek  
 Ian Aaronson  
 Jennifer Baron  
 Nathan Deitsch  
 Sophie Deitsch  
 Murray Lancer  
 Alan Rovick  
 Mindelle Seltzer  
 Estelle Heidenberg  
 Harriett Steinert  
 Sarah Deitsch  
 Joseph Fischbein  
 Avron Lesser  
 Samantha Goldberg  
 Martin Lazarus  
 Howard Brilliant  
 Alex Fox  
 Seham Lewis  
 Ira Berendt  
 David Ellison  
 Pearl Hyman  
 Marian Yarus  
 Carol Baker  
 Lewis Harris  
 David Ball  
 Myron Kramer  
 Stanley Karesh  
 Rita Busman

## SISTERHOOD- ELISHEVA HOLUB

I would like to use this opportunity to thank everyone who supported our first fundraiser of the year. While final figures are not in as I write this Scroll article, we already know that our Parking Space Raffle more than doubled last year's income. Thank you, Joan Feldman!

2011-2012 Membership Dues (\$36) can still be paid, but I would like to recognize the women who purchased our Sarah, Rebecca, and Rachel memberships:

- **Sarah (\$90):** Barbara Backer, Evaline Delson, Debbie Engel, Elisheva Holub, Beth Neboschick, Ruth Oser, Anita Zucker.
- **Rebecca (\$72):** Sarah Book, Joan Halushka, Linda Krawcheck, Rose Levin.
- **Rachel (\$54):** Sandi Archambault, Patti Bagg, Nancy Banov, Elinor Cohen, Debra Engel, Joan Feldman, Janet Friedman, Marsha Gewirtzman, Linda Gaier, Irene Gilbert, Mindy Hawkins, Daphne Hubara, Nanci Kestenbaum, Adel Lazarus, Abby Levine, Judy Lutz, Marjorie Lynch, Lydia Mandel, Janet Masonberg, Cathy Morris, Evelyn Needle, Sandra Peskin, Karen Pinosky, Naomi Simon, Karen Stark, Laura Zucker.

Thank you, Rhonda Richards, for your continuing work as Financial Secretary. Irene Gilbert, our Membership chair, is planning a new member event on October 30th for all our new members. Roxann Spandorfer will be hosting.

New Year's Greetings once again is a success under the leadership of Sandra Peskin. The High Holiday Booklet fundraiser met last year's income and more. Thank you, Adel Lazarus and Sandi Archambault! Our Rosh Hashanah honey brought wishes for a sweet New Year to nearly 100 people. Thank you, Lydia Mandel and Roxann Spandorfer!

There are a few dates in October with Sisterhood highlights. Our Anniversary Shabbat will be October 1st. Come celebrate the October anniversaries and top off your Kiddush luncheon with a slice of our delicious anniversary cake. Thank you, Debbie Engel and Evelyn Engel. And thank you, Rita Busman, for the anniversary letters!

Our October Open Board Meeting will be October 16th, 10AM, at the Synagogue. We will be voting on the final draft of our revised policies. Thank you, Gail Silverman, for all your hard work in the revision process.

Lastly, I invite you to join us for on October 19th for Book Club at the home of Gail and Lenny Silverman. We will review "Home in the Morning" by Mary Glickman. Mary will be our Donor Event speaker on November 6th. The office still has signed copies of this book for \$17. Bring your book to the Donor Event where Mary will be pleased to personalize it. Book Club reviews are always lively. Join in the discussion at Gail's home at 7:30PM. If you have a book to suggest, we are always looking for good books to read and review.

### SAVE THE DATE

2011-2012 Sisterhood Donor Event

**Sunday, November 6th, 2-4PM**

at the home of Roxann Spandorfer  
2319 Portside Way

Guest speaker & author:  
Mary Glickman

Contact Judy Kaiser at 766-0404 or  
Bonnie Silverberg at 556-5670  
for more information

### SISTERHOOD EMANU-EL JUDAICA SHOP

For the convenience of parents of Religious school students, Sisterhood Judaica Shop will open at 9:00AM on Sunday mornings and will open on Wednesday afternoons at 4:30PM.

All types of Judaica items will be available, either in the cases or through catalog ordering. We will be establishing registries for Bar/Bat Mitzvah celebrants as well as bridal registries. In addition, we would love to work with parents of Bar/Bat Mitzvah celebrants to order Kippot, Tallitot, candy, etc.

Appointments are also available .

Please contact Gloria Adelson at 843-345-7733.

## RELIGIOUS SCHOOL & YOUTH- DAPHNE HUBARA

We jumped into the school year with both feet and have not stopped running since. We have gone on a *g'matira* (numerology based on the Hebrew alphabet) scavenger hunt while learning about important numbers in Judaism. We have been to mini-minyan with Rabbi Rosenbaum on Sunday mornings and minyan with the congregation on Wednesday afternoons. We have listed reasons why we pray and talked about how we should act when we are praying. During snack time, we have been learning about Tzedakah and Social Action. In preparation for Rosh Hashanah we baked honey cookies and made apple candles. Students also created clever contraptions for mess-free apple and honey dipping. A big thank you to the Kestenbaum Family for donating the apples that were used for our Rosh Hashanah candlesticks and to Gloria Adelson for donating the yahrzeit candles that will be decorated and sent home to be lit on Yom Kippur. We are busy bees.....and full of excitement.

Shana Tova from Synagogue Emanu-El's Religious School!

### KADIMA PAINTBALL EVENT

Emanu-El's 6th -8th graders had this to say about Kadima's Paint Ball Extravaganza which took place on September 25, 2011: "We look tie-dyed." "We made new friends with sponges and spray bottles." "Paint ball was awesome and colorful." "Paint Ball was FUN FUN FUN" and "Blasts of the blasts." And: "Unforgettable....Jeans are not for paint ball."



"Even Team": Jasmine Hubara, Ari Levine, Shoshi Weiss, Noa Leigh Hubara, Ben Berry, Lauren Ryba



"Odd Team": Zack Allen, Brian Hawkins, Misha Pekar, Anna Book, Megan Goldberg & Ava Hoffman



### HAPPY ANNIVERSARY TO:

Michael & Barbara  
Halpern

Mitchell & Jennifer  
Feinman

Howard & Harriet  
Stein

Danny & Ruth  
Berlinsky

Ray & Leah  
Greenberg

Howard & Dorothy  
Weiner

Ira & Andrea  
Berendt

Michael & Beth  
Neboschick

Malcolm & Shirley  
Fages

Morey & Sandra  
Lipton

Please join us at  
Sisterhood Anniversary  
Shabbat on  
Saturday, October 1st



## L'SHANAH TOVA

*A poem by Warren Hyman*

Another New Year has rolled around  
 Hope we haven't put on too many a pound  
 It is time to repent and promise to be good  
 And do unto others the best we could  
 We wish our family and friends much good health  
 And it would be nice to throw in some wealth  
 May it be a happy year to come your way  
 And we should praise the Lord every day  
 We pray that everything is Shofar so good  
 We send our regards and all the Mazel we could  
 May the New Year be blessed for all of you  
 All our children and siblings are included too  
 If we have offended any one we wept many a tear  
 Let us all forgive and forget and have a  
 healthy and happy NEW YEAR

## OPERATION ISAIAH

THE FIRST  
 MITZVAH OF THE NEW  
 YEAR!



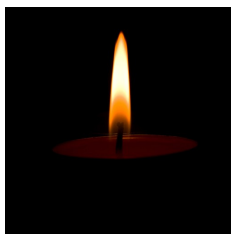
*"Share your bread with the hungry"*  
 -- Isaiah 58:7

Please join us in this special effort to help defeat hunger by bringing a bag filled with non-perishable food to the synagogue anytime between Rosh Hashanah and Kol Nidre. Food items should be placed in the special collection barrels. The food collected will be distributed to a local shelter.

## MEMORIAL SERVICE

Sunday, October 2nd, 11:00AM

It is traditional to visit the graves of loved ones during the High Holy Day season. Please join Rabbi Rosenbaum at a brief memorial service at Emanu-El's Maryville Cemetery.



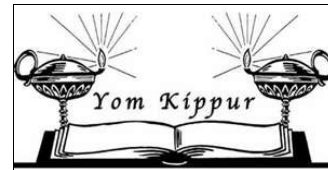
## PRE-YOM KIPPUR RITUALS

Yom Kippur is the Annual Day of Atonement, the one religious occasion which is observed entirely in the synagogue. The meal, which precedes this Fast (on Yom Kippur Eve), is intended to be a spiritual experience for the entire family. This meal is eaten early so that the

family, without the need to rush, can be in the Synagogue before sundown. Following the Birkat

## LIGHTING OF THE MEMORIAL CANDLE

It is customary to light a memorial candle for departed family members on Yom Kippur. The memorial lamps are lit before the holiday candles are lit on Yom Kippur Eve, October 7th, before you come to Synagogue.



## BREAK THE FAST WITH US!

YOU ARE CORDIALLY INVITED TO OUR  
 ANNUAL BREAK FAST  
 SATURDAY, OCTOBER 8TH,  
 AT THE CONCLUSION OF THE  
 NEILAH SERVICE.

HOSTED BY: DR. & MRS. WILLIAM  
 GROSSMAN AND  
 DR. ETTA LEAH BLUESTEIN &  
 MR. NICKY BLUESTEIN



## FIND US ON SOCIAL MEDIA!

"Like" the Synagogue Emanu-El page on Facebook.  
 Follow us on Twitter: @SynagogueEE

facebook

twitter 

## SUKKAH BUILDING

CALLING ALL BUILDERS!  
ROLL UP YOUR SLEEVES AS WE  
TAKE DOWN THE HIGH HOLIDAY CHAIRS AND  
CONSTRUCT EMANU-EL'S SUKKAH!

Sunday, October 9th following 9:00AM Minyan  
Help get the Sukkah ready for our Sukkot dinner  
on Friday, October 14th.

*May your home be blessed with  
happiness and joy!*



## SUKKAH HOP/OPEN SUKKAH

Our Religious School will meet as usual on **Wednesday, October 12th**. Students will complete decorating our Synagogue Sukkah, then join Erev Sukkot services at 5:30PM. School will conclude in the Sukkah at the Rosenbaums' house,  
**10 River Reach Way (Governor's Pointe)**

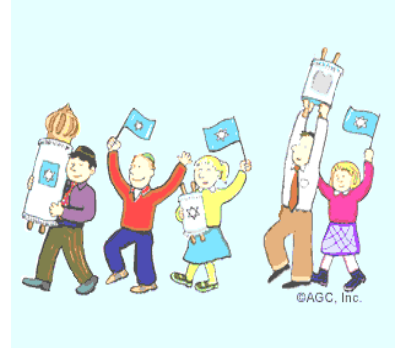
Following Religious School, the Rosenbaum family invites the congregation to an Open Sukkah celebration at their home.

Guests are welcome between 7:00-8:30 p.m.  
Light refreshments will be served.

## BUSINESSPERSON'S LUNCH AND LEARN

**Tuesday, October 18th, 12-1PM**  
Synagogue Emanu-El's Sukkah

Topic: "Is There Really Such A Thing As Business Ethics?"  
Pack your own lunch and enjoy some mid-day refreshment!



## SIMHAT TORAH REJOICING!

See the entire Torah unwrapped in front of your very eyes!  
The Torah will be unwrapped during our Simhat Torah celebration on **Thursday, October 20th**. It is a wonderful and memorable sight as our children rejoice in reading the Torah.

All students with a Bar/Bat Mitzvah date will stand next to their Torah portion while the unwrapped Torah is on display.

Enjoy singing, dancing and refreshments.

As there is no Religious School the previous night, students and their families are strongly encouraged to attend.

**Services begin at 6:15PM.**

## YAHRTZEITS

### October 1-3 Tishrei

Sarah Solomon

### October 2-4 Tishrei

Rea Lichtenstein

Meyer Dumas

### October 3-5 Tishrei

Saul M. Cohen

Barbara Hershenson

Marion Schwartz

Marianne Purwin

### October 4-6 Tishrei

Michael Kramer

Samuel Brock

Sara Friedman

Erwin Raffel

Albert Goer

### October 5-7 Tishrei

S. Harris Goldberg

### October 6-8 Tishrei

Yonah Gelson

Harry Ackerman

Sidney Melet

Michael Josifs Gordezky

Sura-Lea Jukils Gordezky

### October 7-9 Tishrei

Abraham Fages

### October 8-10 Tishrei

Larisa Pilat

### October 10-12 Tishrei

Simon Sharnoff

Malvina Weiner

### October 11-13 Tishrei

Abe Dumas

Lewis Friedman

### October 12-14 Tishrei

Herman Fleishman

Ida Roseman

### October 13-15 Tishrei

G. Vernon Horowitz

Sam Schild

Ida Rosen

### October 14-16 Tishrei

Ellen Lerner

Herbert Silver

Charlotte Gross

Goldie Levine

### October 15-17 Tishrei

Morris Klein

### October 16-18 Tishrei

Saul Genet

Israel Geldbart

Maxwell Lehrer

### October 17-19 Tishrei

Irwin Kalik

Hyman Rabin

### October 18-20 Tishrei

Beverly Friedman

Moss Reuben

### October 19-21 Tishrei

Bronya Raykhlin

### October 20-22 Tishrei

Ida Breibart

Abe S. Karesh

### October 21-23 Tishrei

Jack Grossman

Florence Boris

David Nossokoff

Esther Hertzberg

Rose Toporek

David Nossokoff

### October 22-24 Tishrei

Martin Goldberg

### October 23-25 Tishrei

Rebecca Goldberg

Albert Kohn

### October 24-26 Tishrei

Dorothy Mendelsohn

William Cohn

Fay Moyer

### October 25-27 Tishrei

Helen Schulman

Dorothy Cohen

Jacob Blatt

Joseph Frisch

Frances Lubart

### October 26-28 Tishrei

Jennie Ackerman

Alan Ruden

Louis Kaynard

Alech Ellison

### October 27-29 Tishrei

Ida Kalinsky

Samuel Shapiro

Ida Kalinsky

### October 29-1 Heshvan

Daniel Silverman

Harris Cohen

Anna Littman

Susan Berson

Chaim Weiss

### October 30-2 Heshvan

Irene Gold

Joseph Sabel

Norman Levin

### October 31-3 Heshvan

Arthur Rovick

Elihu Mazo

### November 1-4 Heshvan

Lee Roy Schraibman

### November 2-5 Heshvan

Ethel Farber

### November 3-6 Heshvan

Evelyn Daniel

Daisy Bogin

### November 4-7 Heshvan

Edith Toporek

John Lefkowitz

## CALL TO MINYAN

### October 1-7

Libby Soffar

Len Lichtenstein

Madolyn Geldbart

Judi Corsaro

Michael Schwartz

Lisa Isaacson

Patti Bagg

Clive Brock

Ruth Silverman

Susie Steinberg

Dutch Cohen

Jerry Kaynard

Marcia Spar

Ida Polyachenko

Malcolm Fages

### October 8-14

Blyma Pilat

Howard Weiner

Robert Friedman

Audrey Fleishman

Florence Horowitz

Sonja Pearlman

Louis Tanenbaum

Rhonda Richards

Hannah Silver

Mildred Maier

Julie Ellison

Nancy Zisk

### October 15-21

Florence Horowitz

Sylvia Wolper

David Kalik

Richard Friedman  
Adrian Reuben  
Klara Veyber  
George Breibart  
Bernard Karesh  
Sheralyn Rosenblum

### October 22-28

Barbara Halpern  
Marshall Miller  
Suellen Segal  
Burnet Mendelsohn  
Joseph Mendelsohn

Greg Yarus

Janet Friedman

Marshall Heiden

Hannah Silver

Naomi Simon

Sondra Jaffe

Renee Frisch

Marshall Heiden

Jerry Kaynard

Ellison Berlin

Ivan Nossokoff

Joseph Shapiro

Myra Howard

### October 29-November 4

Jackie Berlinsky

Bruce Cohen

Phyllis Cohen

Mary Littman

Deborah Rodriguez

Sarah Book

Martin Gold

Ted Levin

Herbert Rovick

Gloria Adelson

Eva Oxler

Susan Altman

Deborah Toporek

Fran Grossman



## **SYNAGOGUE EMANU-EL CONSOLIDATED RULES FOR BURIAL**

**Due to inquiries posed to the synagogue as it relates to cemetery burial rules we are publishing the Rules for Burial Rights that have been in place for many years.**

### **Eligibility**

All Synagogue members in good standing are entitled to burial privileges. A member in good standing is defined as current in all financial obligations to the synagogue through the end of the most recent fiscal year. Only members of the Jewish faith may be buried in the Synagogue Emanu-El Cemetery. The Cemetery Committee has the authority to designate the gravesite for burial. Non-members may not reserve a gravesite. However, a member in good standing may sponsor a non-member who is the member's immediate family: Grandmother, Grandfather, Mother, Father, Siblings and their spouse, Children and their spouse. A surviving spouse may reserve the adjoining plot. All stated criteria regarding burial fees must be met at time of interment.

### **FEES**

The cost of a gravesite is equal to the prevailing annual Synagogue Emanu-El family dues rate at the time of gravesite selection. One third of the gravesite fee is due on selection of gravesite. The balance is due within 2 years from the date of selection or within 90 days of interment, whichever is less. Alternate payment schedules may be negotiated with the Chairman of the Cemetery Committee. **THE GRAVESITE FEE IS NON-REFUNDABLE.** Members for at least six years, and in good standing at time of interment shall not be assessed a burial right fee. Past members in good standing for at least twenty-five years, shall not be assessed a burial right fee at time of interment. If a new member purchases a gravesite and passes away prior to completing six years of membership, a burial rights fee will be assessed at the time of interment. The fee will be equal to the non-member burial rights fee (6x annual dues) and prorated based on the new member's actual length of membership at time of interment. Non-members may be buried for a fee of six times (6X) the annual family dues rate. If the gravesite fee is not paid as agreed to and approved, then the price of the plot would change to the prevailing family dues.

### **MAINTENANCE OF BURIAL PRIVILEGES**

Gravesite fees are not refundable. In order to retain burial privileges after purchasing a gravesite:

Continuity of Synagogue Emanu-El membership is required. If a gravesite is purchased by a member, and used by that person when no longer a member, an additional burial fee, equal to the non member fee at the time of interment, will be assessed. A gravesite is non-transferable without written consent of the Cemetery Committee.

If the gravesite is to be used by an immediate family member of the owner, the family member at the time of his/her interment shall be a member in good standing of Synagogue Emanu-El or be assessed non-member burial fees. If at the end of FIFTY (50) years and the Synagogue has given notice by publication (notice to be published once in the Post & Courier), the title to the plot will revert to the Synagogue.

### **PERPETUAL CARE TRUST FUND**

The Cemetery Committee designates that a trust fund be established for the purpose of perpetual care for the cemetery. An amount not less than one hundred thousand dollars (\$100,000.00) shall remain in this fund at all times.

### **GRAVESITE MAINTENANCE**

Before any markers are erected, a plan of the markers must be submitted to the Cemetery Committee for approval. Markers must not exceed 44 inches in height and 48 inches in width. (The size of each plot being 48 inches wide and 96 inches long). No coping or foot markers may be used unless said marking be ground level so as not to interfere with the maintenance and uniformity of the cemetery. Personal landscaping of individual gravesites is not allowed without written permission of the cemetery committee.

Synagogue Emanu-El Cemetery Committee-September 21, 2011

**If you have any questions, please don't hesitate to call the Synagogue Office.**

## **SYNAGOGUE EMANU-EL HIGH HOLY DAYS SCHEDULE 5772**

*(Clip and save!)*

### **ROSH HASHANAH**

Erev 1 <sup>st</sup> Day– Wednesday, September 28	Mincha/Maariv	6:45PM
1 <sup>st</sup> Day– Thursday, September 29	Shaharit	8:30AM
	Tashlich	6:15PM
	Mincha/Maariv	7:00PM
2 <sup>nd</sup> Day– Friday, September 30	Shaharit	8:30AM
	Kaballat Shabbat	6:00PM

### **FAST OF GEDALIA**

Sunday, October 2	Fast ends at	7:52PM
-------------------	--------------	--------

### **EREV YOM KIPPUR**

Friday, October 7	Mincha	6:15PM
	Kol Nidre	6:30PM

### **YOM KIPPUR**

Saturday, October 8	Shaharit	9:00AM
	Mincha	5:00PM
	Neilah	6:15PM
	Havdalah/Break the Fast	7:43PM

### **EREV SUKKOT**

Wednesday, October 12	Mincha/Ma'ariv	5:30PM
-----------------------	----------------	--------

### **SUKKOT**

Thursday, October 13	Shaharit	9:30AM
	Mincha/Maariv	6:30PM
Friday, October 14	Shaharit	9:30AM
	PJ Shabbat	5:15PM
	Dinner in the Sukkah	6:00PM
	Kaballat Shabbat	7:30 PM

### **HOL HAMOED SUKKOT**

Monday, October 17-Wednesday, October 19	Shaharit	7:00AM
--	----------	--------

### **EREV SHEMINI ATZERET**

Wednesday, October 19	Mincha/Maariv	5:30PM
-----------------------	---------------	--------

### **SHEMINI ATZERET**

Thursday, October 20	Shaharit	9:30AM
	Mincha/Maariv/Hakafot	6:15PM

### **SIMHAT TORAH**

Friday, October 21	Shaharit	9:30AM
--------------------	----------	--------

## 2011-2012 GIVEAWAY

RAISING MONEY TO RETIRE OUR ROOF DEBT

**Grand Prize- 2012 Hyundai SUV or Sedan from Hendrick Hyundai**



**2nd Prize- Custom Bike from Affordabike**



**3rd Prize- \$200.00 cash**



Get your tickets now by contacting  
 Nicky Bluestein at 270-7646, Roxann Spandorfer at 708-5765  
 or Leah at the Synagogue Office at 571-3264  
 \$99.00 for 1 ticket    \$500.00 for 6 tickets  
 Drawing will be held on Sunday, December 4th at our  
 Pre-Hanukkah celebration

### **HAZAK LUNCHEON AND PROGRAM: BEST LUNCH DEAL IN CHARLESTON**

When: Tuesday, October 12, 2011

Where: Zucker Social Hall

Time: 12 Noon PROMPTLY

Cost: Free

RSVP BY FRI. OCTOBER 8TH TO THE SYNAGOGUE OFFICE (571-3264)

Topic: You Are What You Drink?

Speaker:: Janie Kraft , Charleston Water System

Water, water, everywhere, And all the boards did shrink. Water, water everywhere, Nor any drop to drink. These famous lines from Coleridge's *Rime of the Ancient Mariner* remind us of something we take for granted, until we do not have it. There is a famous proverb related to that: "We only know the worth of water when the well is dry". Janie Kraft from the Charleston Water System will be here to present on how our water system works and to answer your questions.

---



---

**ADULT EDUCATION**


---

Please join us for the 2011-2012 year of  
**EMANU-EL UNIVERSITY**  
 Tuesday Evenings, 7:00-8:30PM

**Future Fall Semester Classes:**

September 6, 13, 20, 27; October 4, 11, 18, 25; November 1, 8, 15, 29; December 6, 13.

**Spring Semester Classes:**

January 3, 10, 17, 24, 31; February 7, 14, 21, 28; March 13, 20, 27; April 3, 17, 24; May 1, 8, 15.

*Students have the choice of three classes, which take place concurrently:*

- **JUDAISM 101 (INSTRUCTOR: ALLI DEBROW)**

A thorough introduction to Judaism. Explore customs, rituals, and holidays. Appropriate for introductory learners, those looking for a “refresher course”, and for those considering converting to Judaism.

- **THE PERSONALITY OF MAJOR BIBLICAL FIGURES (INSTRUCTOR: ROBERT LOVINGER, PHD)**

This class will consider a number of important people in the Tanakh, trying to understand them in the light of modern psychological theory. It will consider descriptions of their behavior in the Tanakh and see what light modern psychology and psychiatry can shed on their personalities, and in some instances their emotional/mental problems. It will not try to come up with definite answers so much as to raise questions and consider alternatives.

- **ADULT B'NAI MITZVAH (INSTRUCTORS: RABBI ADAM J. ROSENBAUM & PAM COYLE)**

Learn trope (Torah/Haftarah cantillation) and the structure and content of Shabbat services – and help to lead it yourself at Synagogue Emanu-El! Participation pending, the Adult B'nai Mitzvah service will take place Saturday, May 19, 2012.

**Tuition: \$54 per semester or \$100 per year**  
 (financial assistance available, please contact the office)

---

**ONGOING CLASSES, NO PRE-REGISTRATION NECESSARY!**

**Danish and D'rash:** A sneak peek at the week's Torah portion prior to Saturday morning services. Complete with coffee and treats! Once a month, this session will be led by Sisterhood members, including Ellen Miriam Brandwein, with special guest sessions by College of Charleston JSU Advisor Mimi Lewis.

*Saturdays, 9:00-9:30AM*

**HAZAK:** Best lunch deal in town. \$3 gets you a full meal and an informative program. Geared to a senior population, but all ages are welcome!

*2nd Tuesday of each month, 12 noon*

**\*\*\*NEW THIS YEAR!\*\*\***

**Haftarah: More Than Just “Half The Torah”:** The weekly Haftarah (prophetic reading): great to listen to, difficult to understand. Join Rabbi Rosenbaum to unlock the mysteries as we enter the world of Israel's prophets, judges and kings who helped create Judaism's ethical core.

*Thursdays, 9:15-10:00 am, thru May 31st, @ the JCC (1645 Wallenberg Blvd.)*

**Businessperson's Lunch and Learn:** Pack a lunch and meet us for some quick enlightenment at rotating locations throughout Charleston.

*3rd Tuesday of the month, 12 noon*

**YASHER KO'ACH TO THE FOLLOWING CONGREGANTS SCHEDULED TO PARTICIPATE IN SHABBAT SERVICES THIS MONTH:**

Mitch Gilbert, Emma Mandel, Elisheva Holub, Abby Levine, Craig Browdy, Jacob Nussbaum, Mindy Hawkins, Daphne Hubara, Jonathan Zucker, Sarah Steinberg, David Lynch, Anna Book, Samuel Steinberg, Pam Coyle, Herbert Rephan, Jasmine Hubara, Zachary Gilbert, Ellen Miriam Brandwein, Ruth Oser, Ari Levine, Sally Fischbein, Sondra Jaffee, Evaline Delson, Noa Leigh Hubara, Morey Lipton

**If you are interested in leading a Shabbat service, reading Torah or Haftarah, please contact Daphne Hubara at [dlh@knology.net](mailto:dlh@knology.net) or 843-442-6086.**

Please join the Karesh family on Saturday, October 22nd for a special kiddish given by Charlot in honor of Stanley's 90th birthday



**WELCOME NEW MEMBERS**

Mr. Alex Fox & family  
Mr. & Mrs. Scott & Tamar Sternfeld  
Mrs. Seham Lewis  
Dr. & Mrs. Yoni & Maya Kupchik

**KIDDUSH & HAGAFEN FOR SHABBAT**

*To honor a special Simcha, consider sponsoring the Grape Juice for kiddish and have the honoree's name(s) and occasion and your name appear in the weekly bulletin.*

*Cost is only \$36.00!*

*Contact Cathy Morris at 270-7740.*

*You may also sponsor our Saturday morning Kiddish in honor of a special Simcha.*

*Cost is only \$236.00*

*Contact the Synagogue office at 571-3264.*

**HONOR SOMEONE YOU LOVE**

Purchase a Chai Leaf for the Tree of Life, a memory that will last a life time!

Contact Leah at the Synagogue, 571-3264.



**SAVE THE DATE:**

Sunday, October 23

Join us for 9:00AM Minyan followed by a light nosh

Then we will hold our

Congregational Meeting at 10:00AM

Then stay and help us take down the Sukkah

Don't miss this event filled day at Synagogue Emanu-El!

## DONATIONS

### *The Banov Book Fund*

In memory of

**Leon Wolper**, by Charles & Nancy Banov  
**Jamie Lovett, son of Jeanne & Allan Lieberman**,  
 by Charles & Nancy Banov, Don, Barbara, Stuart & Sam  
 Backer

### *Rose & Ted Levin Children's Library Fund*

In memory of

**David Apple**, by Rose & Ted Levin  
**Jamie Lovett, son of Jeanne & Allan Lieberman**, by  
 Rose & Ted Levin

In honor of

**Ted Levin's 70<sup>th</sup> birthday**, by Marsha & Neil  
 Gewirtzman

### *General Fund*

In memory of

**Jamie Lovett, son of Jeanne & Allan Lieberman**,  
 by Lynn & Herb Gorod, Burnet & Jane Mendelsohn

In honor of

**Julie & David Ellison's anniversary**, by Barbara &  
 Haskell Ellison  
**The Bat Mitzvah of Maggie Berlin, granddaughter of**  
**Marilyn Hoffman**, by Joan & Perry Halushka  
**The new granddaughter of Susan Garfield**, by Joan &  
 Perry Halushka

### *Marvin H. Wolper Building Fund*

In memory of

**Moses Wolper**, by Betsy Wolper

In honor of

**Charlot Karesh's birthday**, by Sally & Mickey Fischbein

### *Pearlman Family Floral Fund*

In memory of

**Jamie Lovett, son of Jeanne & Allan Lieberman**, by  
 Judy & Charles Kaiser

### *Prayer Book Fund*

In memory of

**Rose B. Sokol**, by Evelyn & Morton Needle

### *Men's Club*

In honor of

**Michael Mills, becoming President of Federation**  
**of Jewish Men's Club**, by Ellen & Robert Steinberg

### *Lenora & Nathan Goldberg Cultural Fund*

In memory of

**Jamie Lovett**, by Harriet & Charlie Goldberg

### *Memorial Fund*

In memory of

**Genya Veyts**, by Zhenya Berenboim  
**Leopold Cohen**, by Judy Lutz  
**Isaak Chernomordik**, by Lev Chernomordik  
**Jamie Lovett, son of Jeanne & Allan Lieberman**,  
 by Sandy & Howard Jaffe, Frances & Joe Chase, Diane  
 Katz, Joan & Perry Halushka

### *Israel & Rebecca Geldbart Fund*

In memory of

**Ralph Geldbart**, by Melvin & Linda Schlanger

### *Rabbi's Discretionary Fund*

In memory of

**Stanley Littman**, by Mary Littman

**Michael Goldberg, father of Suzanne Lynch**, by  
 Bernard & Theresa Solomon  
**Jamie Lovett, son of Jeanne & Allan Lieberman**,  
 by Bernard & Theresa Solomon  
**Lila Feintuch**, by Helen & Irving Lipsky  
**Alice Menzer**, by Karen Ullian

In honor of

**Harvey Spar's birthday**, by Tobey & Arnold Holzer  
**Ruth Berlinsky's birthday**, by Friends  
**Charlot Karesh's birthday**, by Theresa & Bernard  
 Solomon

Speedy recovery of

**Ruth Berlinsky**, by Theresa & Bernard Solomon

### *Religious School Programs*

In honor of

**Maggie Berlin's Bat Mitzvah**, by Libby Soffar

## DONATIONS

### *Ray & Leah Greenberg Education & Endowment Fund*

In memory of

Leon Wolper, by Margie Lynch

Elaine Dontzig, by Margie Lynch

In honor of

Jonathan Brilliant receiving the Artist Fellowship by SC  
Arts Commission Board, by Ellen & Robert Steinberg

### *Rose & Henry Koslow Minyan Fund*

In memory of

Ethel H. Epstein, by Norm & Toni Epstein

Jamie Lovett, by Harriet Warshaw

In honor of

The wedding of Mark Lynch & Lorin Rothberg,  
by Marcia Shealey

### *Steinberg Chapel & Torah Fund*

In memory of

Jamie Lovett, son of Jeanne & Allan Lieberman,  
by Libby Soffar

### *Sisterhood Emanu-El Kitchen Fund*

In memory of

Evelyn K. Cremer, by Joan & Fred Feldman

Our beloved daughter, Stacy Archambault Smith,  
by Sandi & Sandy Archambault

Jamie Lovett, by Sunny & Samuel Steinberg, Marilyn  
Hoffman

Leon Wolper, by Barbara & Don Backer

In honor of

Charlot Karesh's birthday, by Betty Pearlman, Ruth  
Berlinsky, Sandra & Morey Lipton, Arthur & Sheralyn  
Rosenblum, Aaron & Leah Pinosky, Sybil Kalinsky, Gail &  
Lenny Silverman, Gilbert & Sara Snyder, Sheran Rittenberg,  
Marilyn Hoffman, Linda & David Cohen

The Engagement of Jeffrey Zucker, by Sunny & Samuel  
Steinberg

Speedy recovery of

Donald Backer, by Sunny & Samuel Steinberg

### *Sisterhood Bereavement Fund*

In memory of

Harris Cohen, by Phyllis Cohen

Lillian Passink, by Phyllis Cohen

### *USY/Kadima Programs*

In honor of

Jacobo Mintzer becoming President of  
International Association for Geriatric  
Psychiatry, by Ellen & Robert Steinberg

Synagogue Emanu-El appreciates all contributions.  
Donations of \$10.00 and above will be listed in "The  
Scroll" and an acknowledgement will be sent from  
the office. Please make checks payable to  
Synagogue Emanu-El with a notation to  
which fund you are contributing.

2010 Endowment Fund

The Banov Book Fund

Biblical Garden/Landscape Fund

Cantor's Jewish Music Fund

Ethel & Jacob Cohen High Holiday

Prayer Book Fund

Israel & Rebecca Geldbart Fund

General Fund

Lenora & Nathan Goldberg Cultural Fund

Samuel Golembe Memorial Fund

Men's Club

Ray & Leah Greenberg Education  
& Endowment Fund

Bethe Rittenberg Homeless Shelter &  
Social Action Fund

Rose & Henry Koslow Minyan Fund  
Memorial Fund

Pearlman Family Floral Fund

Prayer Book Fund

Rabbi's Discretionary Fund

Steinberg Chapel & Torah Fund

Religious School Programs

Marvin H. Wolper Building Fund  
Youth Fund

Zucker Kiddush & Oneg Fund

USY/Kadima Programs

Freda & Melvin Bluestein Fund for Religious School  
Scholarships

Grush Shabbatone Fund

L'Dor V' Dor Maintenance Fund

Cemetery Fund

Rose & Ted Levin Children's Library Fund

### **Sisterhood Funds:**

Oneg Fund, Bereavement Fund,  
Sisterhood Emanu-El Kitchen Fund

# OCTOBER 2011

Minyan Schedule: Mon-Fri 7:15AM

Mon-Thurs 5:30PM

Sundays 9:00AM; Rosh Hodesh 7:00AM

Friday Night Service 6:00PM

Saturday Morning Service 9:30AM

Calendar Subject to Change

Sun                      Mon                      Tue                      Wed                      Thu                      Fri                      Sat

						1 Anniversary Shabbat
2 Fast of Gedalia: Fast ends 7:52PM Religious School 9:30AM Cemetery Memorial Service 11AM	3	4 Emanu-El University 7PM	5 Religious School 4:15PM	6 Rabbi's Class @JCC 9:15AM	7 Erev Yom Kippur Minha 6:15PM Kol Nidre 6:30PM	8 Yom Kippur Shaharit 9AM Minha 5PM Neilah 6:15PM Havdalah/Break Fast 7:43PM
9 Chair Party/ Sukkah Construction (after minyan)	10	11 HAZAK 12PM  Emanu-El University 7PM	12 Religious School 4:15PM Minha/Ma'ariv 5:30PM Rosenbaum Open Sukkah 7-8:30PM	13 Sukkot Shaharit 9:30AM Minha/Maariv 6:30PM	14 Sukkot Shaharit 9:30AM PJ Shabbat 5:15PM Sukkah Dinner 6PM Services 7:30 PM	15
16 Religious School 9:30AM	17 Hol HaMoed Sukkot 7AM Minyan	18 Hol HaMoed Sukkot 7AM Minyan Businessperson's Lunch & Learn, Synagogue Sukkah, 12-1PM Emanu-El University 7PM	19 Hol HaMoed Sukkot 7AM Minyan  Erev Shmini Atzeret 5:30PM Minyan	20 Shmini Atzeret Shaharit 9:30AM Simhat Torah 6:15PM Services	21 Simhat Torah Shaharit 9:30AM	22 Tot Shabbat 10:30AM
23 Religious School 9:30AM  Congregation Meeting	24	25 Emanu-El University 7PM	26 Religious School 4:15PM	27 Rabbi's Class @JCC 9:15AM	28	29 Bat Mitzvah of Noa Leigh Hubara
30 Religious School 9:30AM	31					